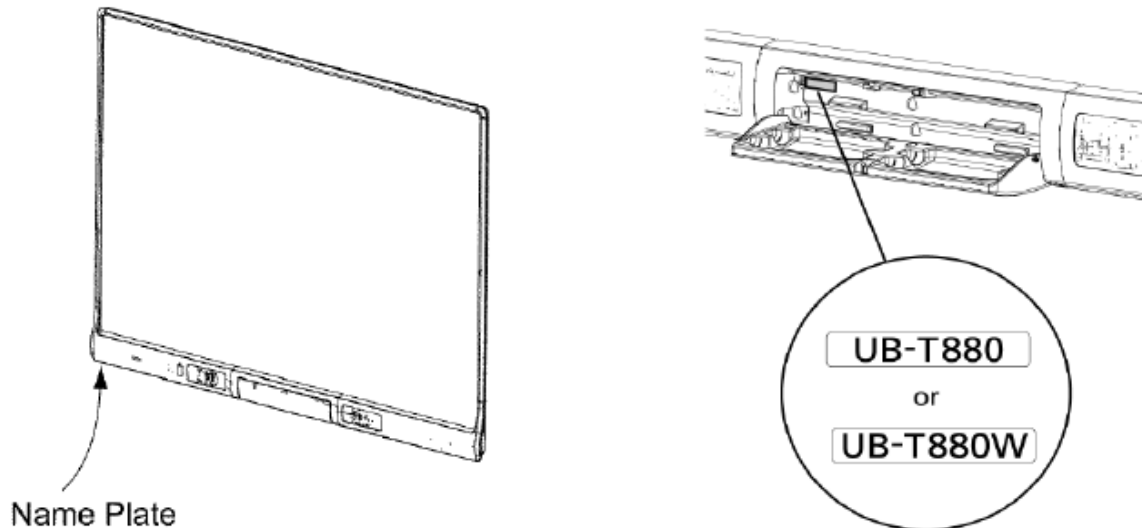


UB-T880 Firmware Update Procedure

For "UB-T880_Updater_1st_Ver120.exe"

Note

This Firmware update should be applied only to the 1st version of UB-T880/T880W. To distinguish whether the Panaboard UB-T880 / T880W is 1st or 2nd version, refer to the Serial Number table below. The Serial Number is located on the name plate under the Left corner of the Panaboard, and the Model Number label is attached in the Left corner inside of the Pen Tray.



Production	Serial Number (7th digit)	Model Number Label
1st Version	xxxxxxAxxxx, xxxxxxBxxxx, xxxxxxCxxxx	None
2nd Version	xxxxxxDxxxx or later	Yes

Preparation

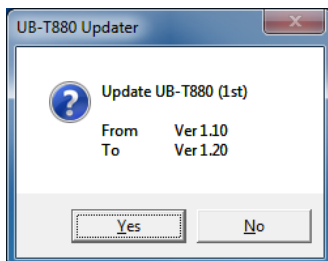
1 Turn the UB-T880 / T880W On.

2. Connect the UB-T880 / T880W to your computer with an USB cable.

※ **System Requirements** : PC IBM® PC/AT or compatible machine (OS : Windows XP, Vista, 7)

Procedure

1 Run "UB-T880_Updater_1st_Ver120.exe".

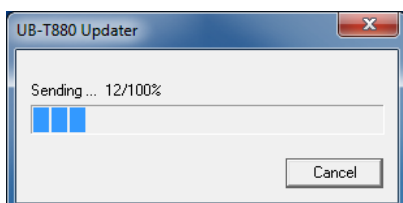


Yes ...to start updating the Firmware

No ...to Cancel

2 Click **Yes** to update.

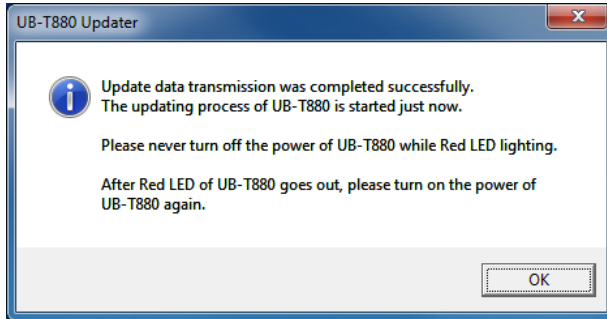
- The progress bar is displayed while updating and the Error LED (RED) on the UB-T880 / T880W lights up.



NOTE: Do not turn OFF the power during the firmware update.

- When the update is completed, the following message is displayed.

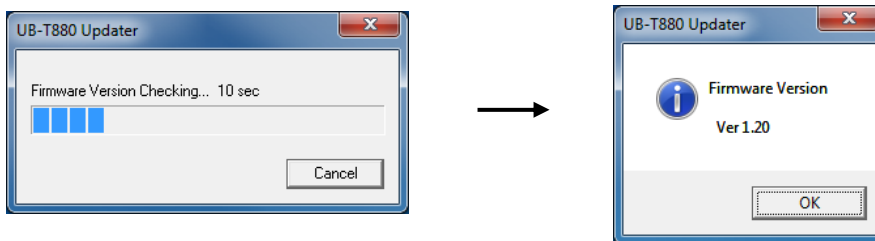
Note: Do Not click on **OK**.



3 After the Error LED (RED) on the UB-T880 / 880W goes out, turn OFF the power of the UB-T880 / T880W.

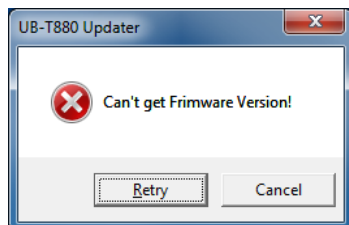
4 Turn ON the power of the UB-T880 / T880W.

Click **OK** to check the updated new Firmware Version.



※ The firmware version is displayed if it is obtained within 1 minute.

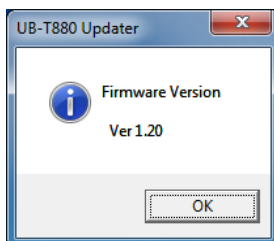
The following message is displayed if the firmware version is not obtained within 1 minute.



Retry ...Try obtaining the firmware version again.

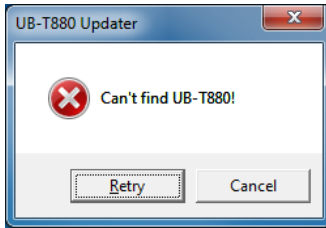
Cancel End the Updater.

5 Once the Firmware Version is displayed, click **OK** to end the Updater.



❌ Error Messages

● Connection Error

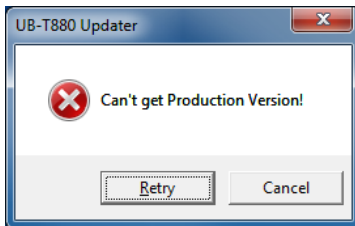


Connection to UB-T880/T880W has failed.

Retry Try connecting again.

Cancel End the Updater.

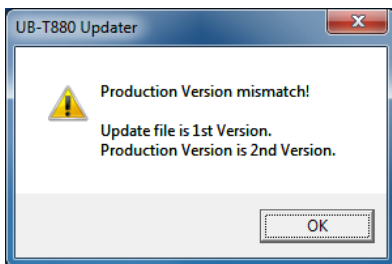
● Production Version Error



Cannot retrieve the Production Version.

Retry Try retrieving the Production Version (1st or 2nd) again.

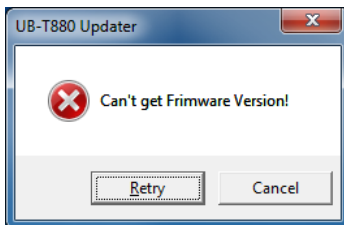
Cancel End the Updater.



The Update file is not compatible with the target Board's Production Version.

OK End the Updater.

● Firmware Version Error

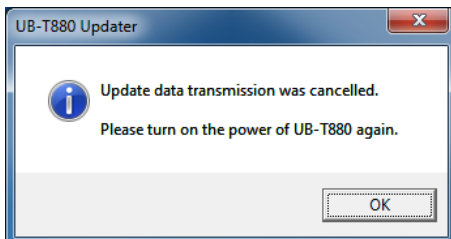


Cannot retrieve the Firmware Version.

Retry Try retrieving the Firmware Version again.

Cancel End the Updater.

● Transmission Cancelled



Transmission was cancelled.

OK End the Updater..